

Customer Art Approval Form

Tracking Number:

MARSHI PO#PAGOSASPRINGS04_Pagosa Springs Lip Balm (W311413)

ITEM PPD-320
Super Moisture SPF 15

REPEAT
*ANY CHANGE REQUEST
TO AN EXACT REPEAT ITEM
COULD BE SUBJECT TO SETUP FEE

LAB-PPD-38218

LCS MOI NPG 15 LAB-PPD-38218

Drug Facts (Continued)

Uses: Helps prevent sunburn - Helps prevent and temporarily protect dry, chapped or sunburned lips.

Warnings

Skin Cancer /Skin Aging Alert: Spending time in the sun increases your risk of skin cancer and early skin aging. This product has been shown only to prevent sunburn, not skin cancer or early aging.

For external use only

Stop use and ask a doctor: If rash or irritation develops and lasts.

Keep out of reach of children: If swallowed get medical help or contact a Poison Control Center right away.

Directions: Apply liberally before sun exposure and as needed.


Children under 6 months of age: Ask a doctor before use.

Inactive ingredients: Crocette, Mineral Oil, Isocetyl Stearate, Microcrystalline Wax, Isopropyl Lanolate, Lanolin, Copernicia Cerifera (Carnauba) Wax, Tocopheryl Acetate, Isopropyl Myristate, Aloe Barbadensis Leaf Extract, Paraffin, Cetyl Alcohol, Tocopheryl Linolate, Flavor, Methylparaben, Propylparaben.

QUESTIONS? 1.800.290.0377

Drug Facts

Active ingredients:	Purpose
Octinoxate (7.5%)	Sunscreen
Oxybenzone (3.5%)	Sunscreen
Petrolatum (40.7%)	Skin Protectant

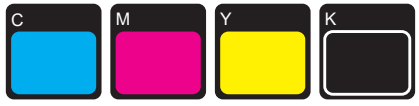


Pagosa Springs Golf Club
Golfpagosa.com

Net Wt. 0.15 oz (4.25g)
▼ Lift for Drug Facts Continued ▼

→
IMPRINT AREA
1.75" X 1.40"

Imprint Color(s)



Art Guidelines

1. Labels

- a. Positive imprint - 5 pt minimum Sample Text
- b. Reverse imprint - 7 pt minimum **Sample Text**
- c. Serif and italic types - 7 pt minimum Sample Text
- d. Line weight, positive lines - .5 _____
- e. Line weight, reverse lines (gap) - .75 **=====**

* Ornate and display type faces will be printed on a case-by-case analysis.

* Registered marks and trademarks should be enlarged for clear printing.

Color Variance Notification

- This PDF file is being viewed on an RGB monitor therefore there will be a variance between the color on your screen and the color of the actual finished product.
- This proof should be used to inspect the layout, spelling, color selection and approximate color appearance.
- Colors printed on different mediums (ie: leash and label) will not be an exact match.
- This proof is not an exact match of the finished product color or quality of the printed peice.